

KIPOR
WUXI KIPOR POWER CO.,LTD

COAST
The Coast Distribution System



IG3000e Service Manual Supplement

Preface

This publication regarding the IG3000e is intended to supplement the IG3000 generator and engine service manuals. The basic construction and operation of this generator is similar and differs only in the frame, fuel tank, and control panel.

Some components on this model are significantly different than those sold outside North America. Performance may be different as well. Contact Kipor for the proper service literature.

Careful observance of the instructions contained in this manual will result in safe and quality service work.

All information, illustrations, directions and specifications included in this publication are based on the latest product information available at the time of approval for printing.

Kipor Wuxi Power Co. Ltd., reserves the right to make changes without incurring any obligation whatever. No part of this publication may be reproduced without written permission.

Contents

1. Specifications.....	3
1.1 Specifications	3
1.2 Performance	4
1.3 Dimensional drawings	5
1.4 Serial Number and Bar Code Location.....	6
2. Wiring Diagram	7
3. Control Panel, Charging Adjuster, and Inverter Module.....	8
4. Frame and Fuel Tank.....	9

1. SPECIFICATIONS

1.1 SPECIFICATIONS

Dimensions and weight

Model	IG3000E
Length	18.9 in. (491mm)
Width	15.75 in. (410mm)
Overall height	20.6 in. (425mm)
Net weight	77 lbs. (36kg)

Engine

Model	KG205GEXi
Type	4 cycle, overhead valve, single cylinder
Displacement	11.96 cu. In.(196 cc)
Bore x stroke (mm)	2.68 x 2.13 (68 x 54 mm)
Horsepower	4.0 @ 3600 rpm
Compression ratio	8.5:1
Cooling system	Forced air
Ignition system	T.C.I
Ignition timing	25 B.T.D.C
Spark plug	F7RTC
Carburetor	Float type, horizontal butterfly valve
Air cleaner	Semi-dry
Governor	Electronic control
Lubrication system	Splash
Oil capacity	.63 qt. (0.6L)
Starting system	Recoil starter /Recoil starter and Electrical starter
Stopping system	Primary circuit ground
Fuel	Automotive unleaded gasoline 87 octane

Fuel tank capacity	4.0 Gal (15.1 L)
--------------------	------------------

Alternator

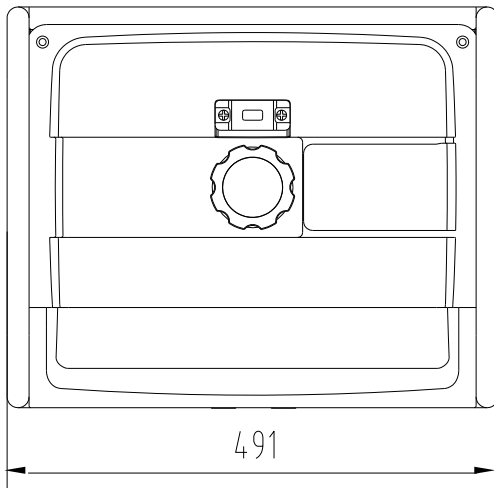
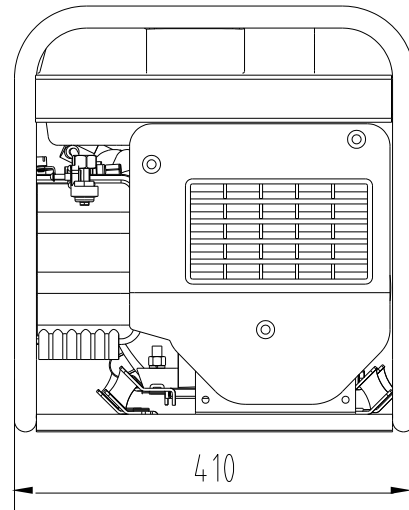
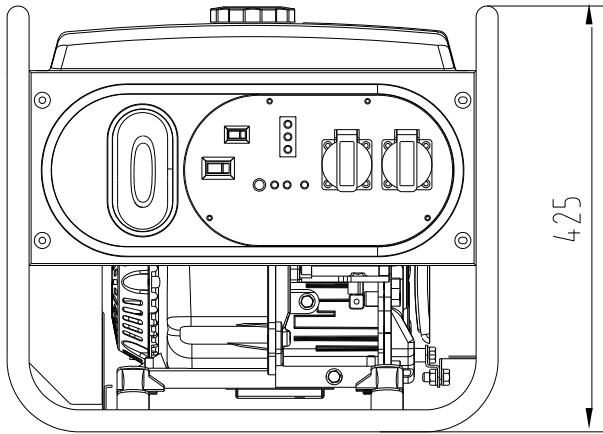
Model	KD 30
Generator type	Multi pole rotation type
Generator structure	Self-ventilation drip-proof type
Excitation	Self-excitation (Magnet type)
Voltage regulation system	PWM (Pulse Width Modulation)
Phase	Three phase (single phase output)
Rotating direction	Clockwise (viewed from the generator end)
Frequency regulation	AC-DC-AC conversion (Inverter type)

1.2 Performance

Model	IG3000Ei
Maximum output (AC)	3.0 KVA
Rated output (AC)	2.8 KVA
Maximum Current	25 A
Rated current (AC)	23.3 A
Rated frequency	60 HZ
Rated voltage (AC)	120V
Rated voltage (DC)	12V
Rated current (DC)	8.3 A
Power factor	1.0
Voltage variation rate- Momentary	5 %max.
Average	1.5 %max.
Average time	3 sec. max.
Voltage stability	±1%
Frequency variation rate	
-Momentary	.5 %max.
-Average	.5 %max.
-Average time	1 sec. max.
Frequency stability	±0.1%
Insulation resistance	10MΩ min.
AC circuit protector	26A(120V)
DC circuit protector	14A
Operating hours at rated load	5.6 Hours
Noise level	65~70 dB @ 23' (7m)

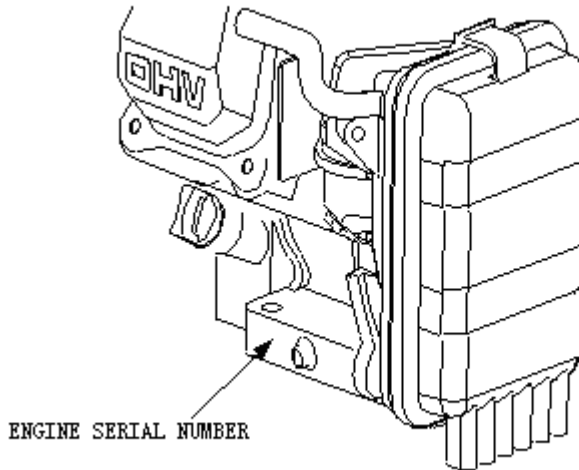
1.3 DIMENSIONAL DRAWINGS

Unit : mm



1.4 Serial number and bar code location

The engine serial number is stamped at the underside of engine side cover. This number is used to determine the engine series.

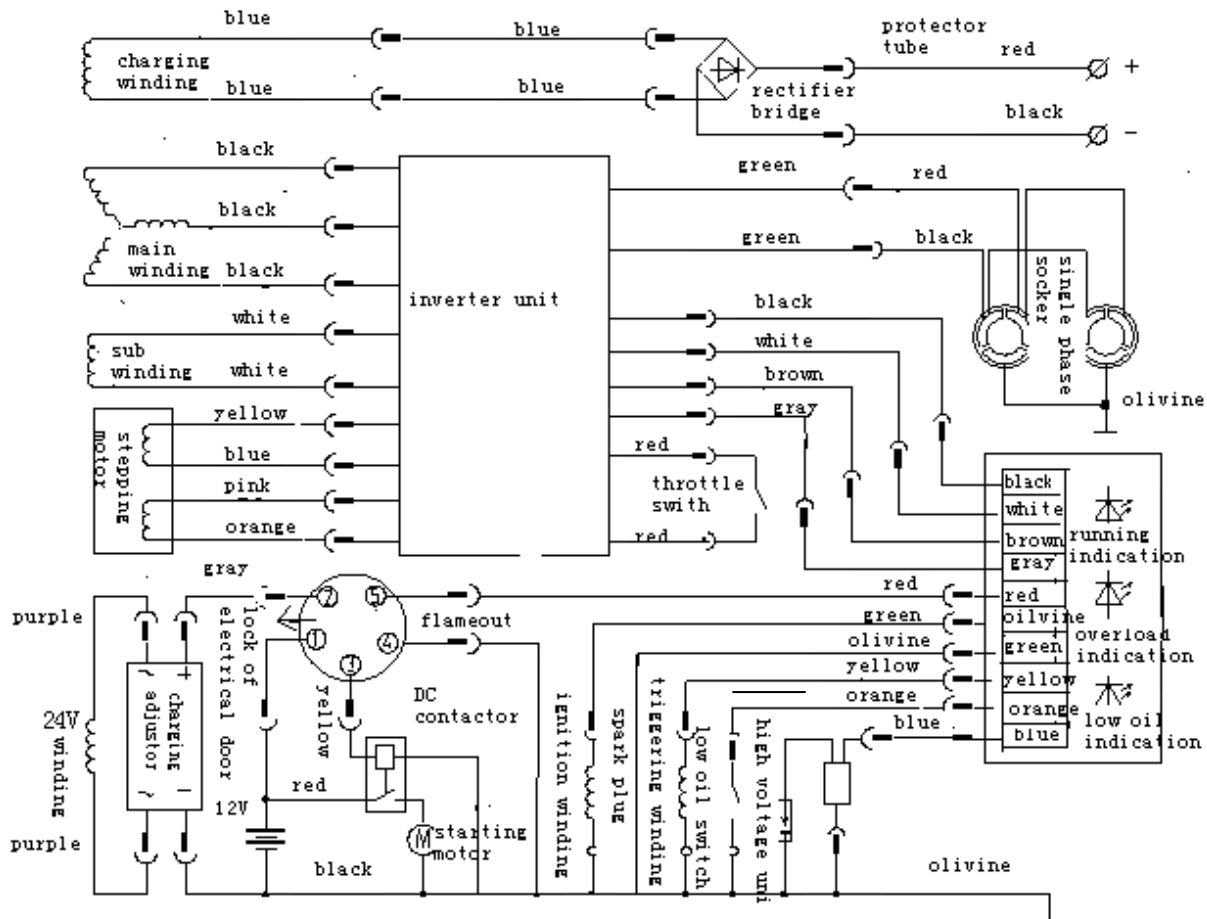


The bar code is used by Coast Distribution to determine production date and warranty administration.

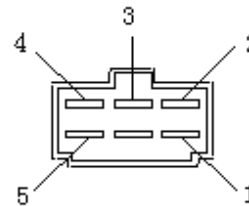


The bar code is found in three locations: on the generator, on the packing carton and on the inside cover of operator's manual

2. Wiring Diagram

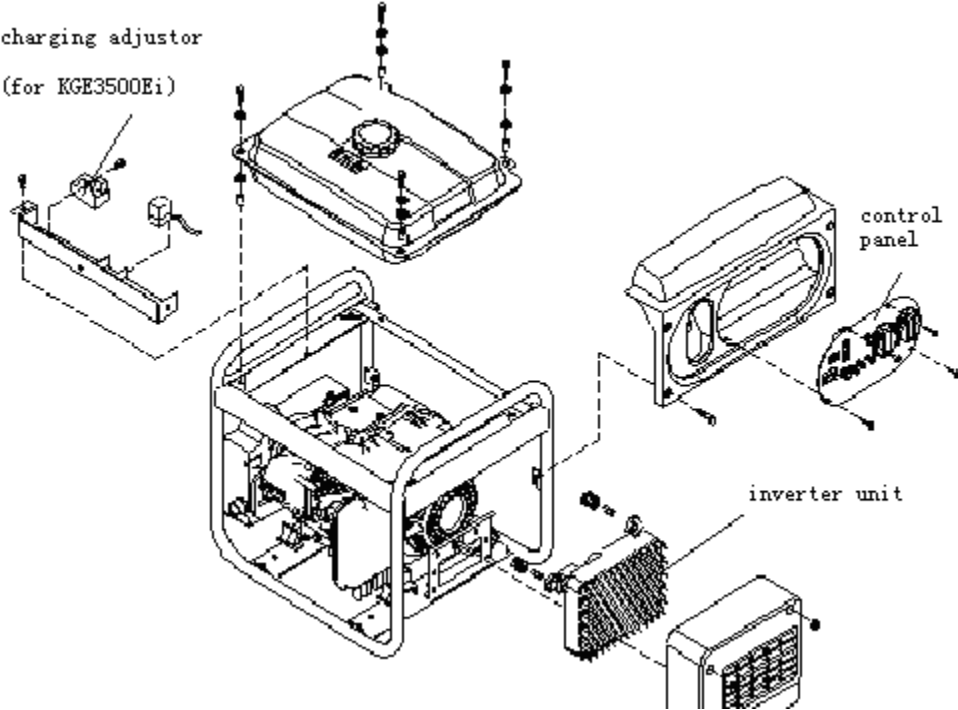


	①	②	③	④	⑤
OFF				●	●
ON	●	●			
START	●	●	●		



3. Control Panel, Charging Adjustor and Inverter Module

Disassembly and assembly



4. Frame and Fuel Tank

Disassembly and Reassembly

